

Licence Information

Environment Protection Licence (EPL) Number	13218
License Holder	MACKA'S SAND PTY LTD
Licensee Address	<p>Licensee: Macka's Sand Pty Ltd 2684 Nelson Bay Rd Salt Ash NSW 2318</p> <p>Premises: Macka's Sand Extraction and Processing Facility Off Nelson Bay Road Salt Ash NSW 2318</p>
Link to the full licence on the EPA website	https://apps.epa.nsw.gov.au/prpoeoapp/Detail.aspx?instid=13218&id=13218&option=licence&searchrange=licence&range=POEO%20licence&prp=no&status=Issued
Anniversary Date:	30-Jun
Information Obtained:	8-Jul-19
Date of Publication:	17-Jul-19



1646 - Macka's Sand - EPL 13218

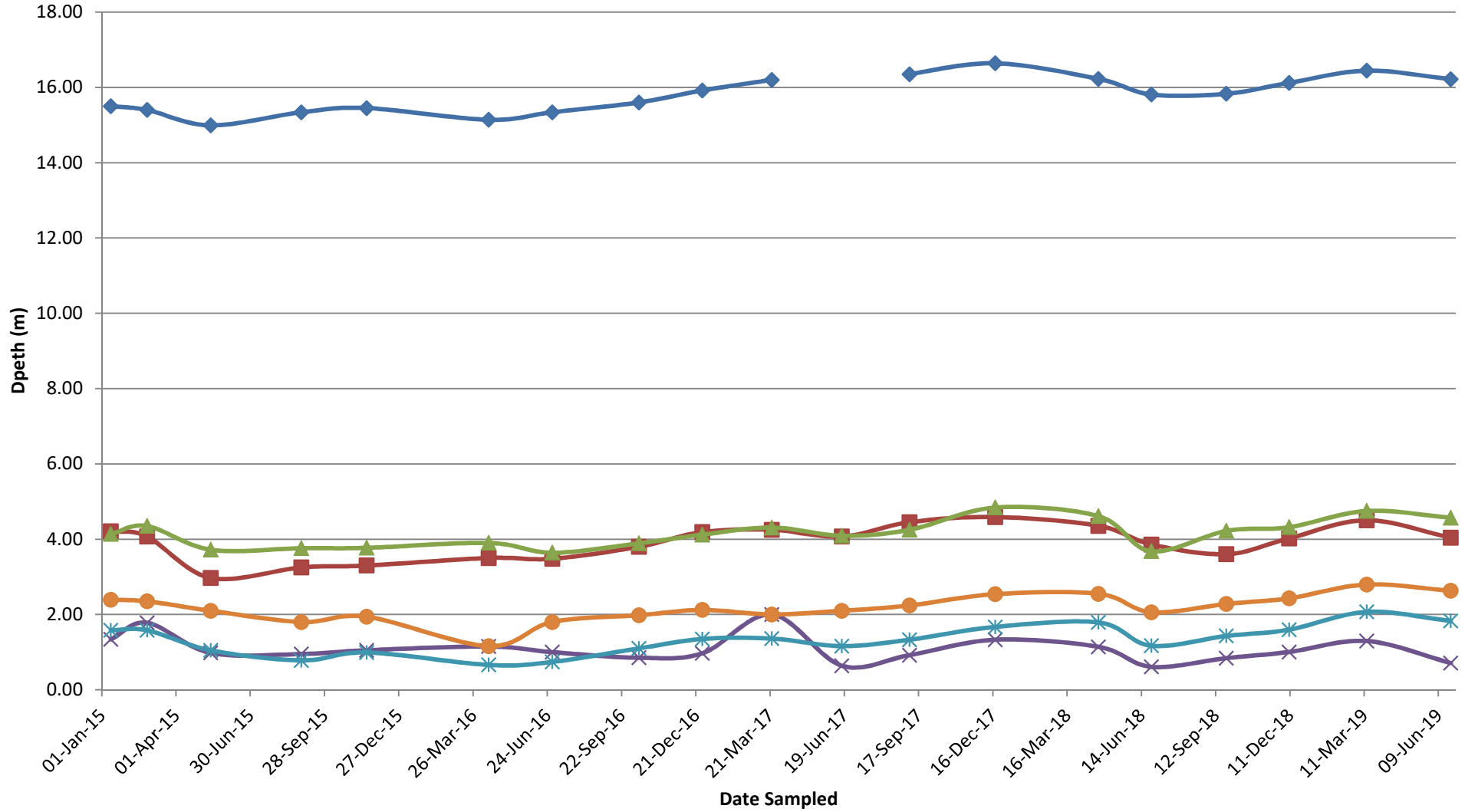
Quarterly Groundwater Monitoring

Sample Date	Depth - EPL (m)						Water Level (PA 08_0142 - SWMP Only)						BL158	Comment
	EPA Point 1 non-specified	EPA Point 2 non-specified	EPA Point 3 non-specified	EPA Point 4 non-specified	EPA Point 5 non-specified	EPA Point 6 non-specified	SP1 > 3.6	SP2 > 2.8	SP3 > 2.6	SP4 > 1.25	SP5 > 3.6	> 3.7		
12-Jan-15	15.50	4.21	4.14	1.34	1.58	2.39	2.00	2.19	2.07	0.41	2.57	1.77		
25-Feb-15	15.40	4.07	4.35	1.78	1.58	2.35	2.10	2.33	1.86	-0.03	2.57	1.81		
13-May-15	14.99	2.97	3.72	0.98	1.05	2.10	2.51	3.43	2.49	0.77	3.10	2.06		
31-Aug-15	15.34	3.25	3.76	0.95	0.78	1.80	2.16	3.15	2.45	0.80	3.37	2.36		
18-Nov-15	15.45	3.30	3.77	1.05	0.99	1.94	2.05	3.10	2.44	0.70	3.16	2.22		
14-Apr-16	15.14	3.50	3.90	1.15	0.66	1.16	2.36	2.90	2.31	0.60	3.49	3.00		
30-Jun-16	15.34	3.48	3.64	1.00	0.74	1.80	2.16	2.92	2.57	0.75	3.41	2.36		
13-Oct-16	15.60	3.80	3.89	0.85	1.10	1.98	1.90	2.60	2.32	0.90	3.05	2.18		
29-Dec-16	15.92	4.19	4.12	0.97	1.35	2.12	1.58	2.21	2.09	0.78	2.80	2.04		
23-Mar-17	16.20	4.25	4.31	2.00	1.36	2.00	1.30	2.15	1.90	-0.25	2.79	2.16		
16-Jun-17		4.07	4.09	0.64	1.16	2.10		2.33	2.12	1.11	2.99	2.06	Sampling error at SP1/EPA Point 1	
06-Sep-17	16.35	4.45	4.25	0.92	1.33	2.24	1.15	1.95	1.96	0.83	2.82	1.92		
19-Dec-17	16.64	4.59	4.84	1.33	1.67	2.54	0.86	1.81	1.37	0.42	2.48	1.62		
23-Apr-18	16.23	4.36	4.61	1.14	1.79	2.55	1.28	2.05	1.60	0.61	2.36	1.61		
26-Jun-18	15.81	3.86	3.68	0.61	1.17	2.06	1.69	2.54	2.53	1.14	2.98	2.10		
25-Sep-18	15.83	3.60	4.22	0.84	1.43	2.28	1.67	2.80	1.99	0.88	2.72	1.88	Standpipe replaced in August 2018.	
10-Dec-18	16.12	4.02	4.32	1.00	1.60	2.43	1.38	2.38	1.89	0.72	2.55	1.73		
14-Mar-19	16.44	4.50	4.75	1.30	2.07	2.80	1.06	1.90	1.46	0.42	2.08	1.36	SP4 Casing broken. Indicative water level based off previously surveyed standpipe height. SP1 & SP5 monitoring undertaken on 15/3/19 due to access restrictions on 14/3/2019.	
24-Jun-19	16.22	4.04	4.57	0.71	1.83	2.63	1.28	2.36	1.64	1.01	2.32	1.53	SP4 Casing broken (repaired and broken again). Indicative water level based off previously surveyed standpipe height.	

Above nominated SWMP trigger level

FY 18/19 Statistics	EPA Point 1	EPA Point 2	EPA Point 3	EPA Point 4	EPA Point 5	EPA Point 6	SP1	SP2	SP3	SP4	SP5	BL158	Comment
Count	4	4	4	4	4	4	4	4	4	4	4	4	
Min	15.83	3.60	4.22	0.71	1.43	2.28	1.06	1.90	1.46	0.42	2.08	1.36	
Average	16.15	4.04	4.46	0.96	1.73	2.53	1.35	2.36	1.75	0.76	2.41	1.63	
Max	16.44	4.50	4.75	1.30	2.07	2.80	1.67	2.80	1.99	1.01	2.72	1.88	

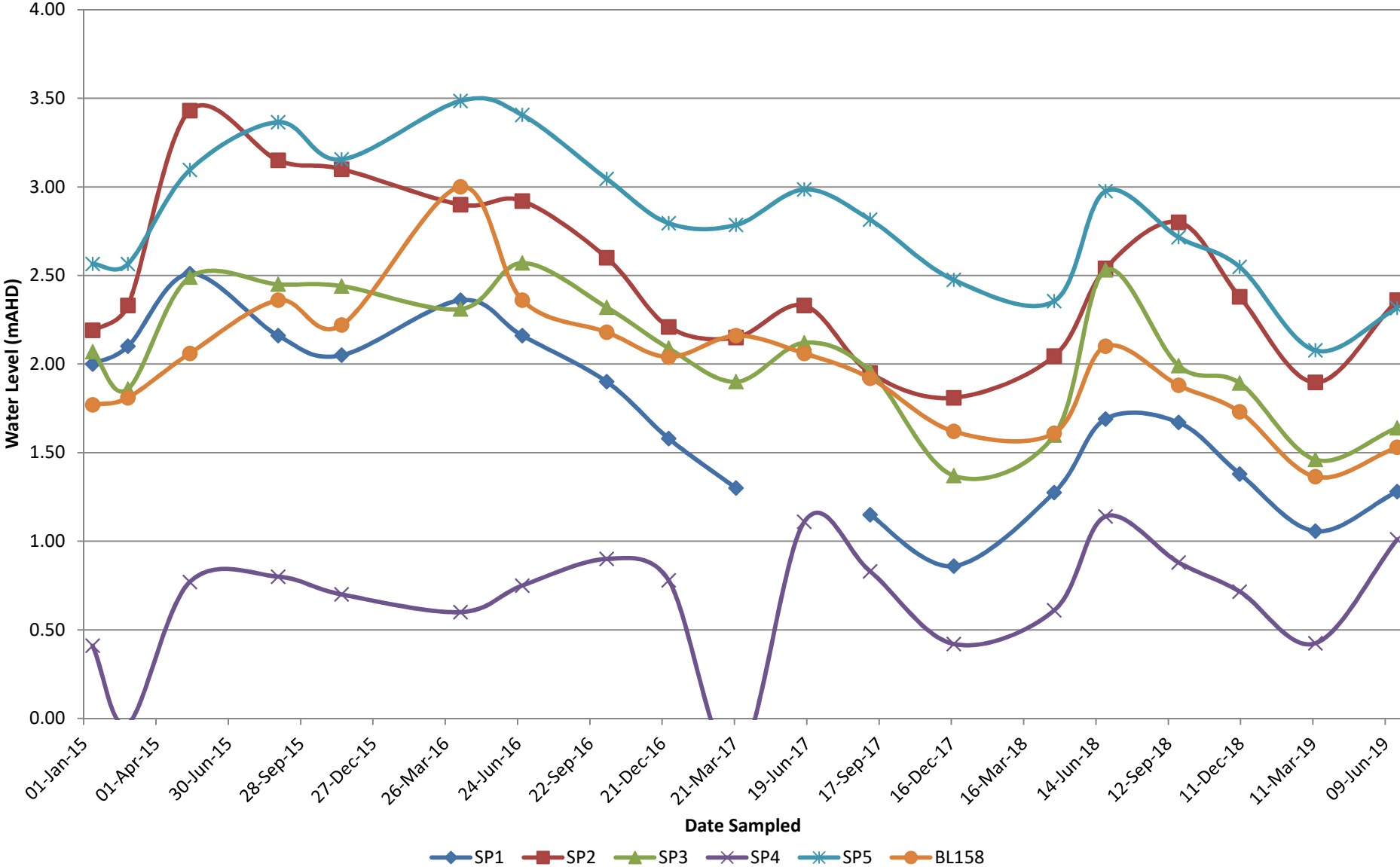
Groundwater Depths (m)



Note: No EPL Limit Specified

- ◆ EPA Point 1
- EPA Point 2
- ▲ EPA Point 3
- × EPA Point 4
- ✱ EPA Point 5
- EPA Point 6

Groundwater Levels (mAHD)



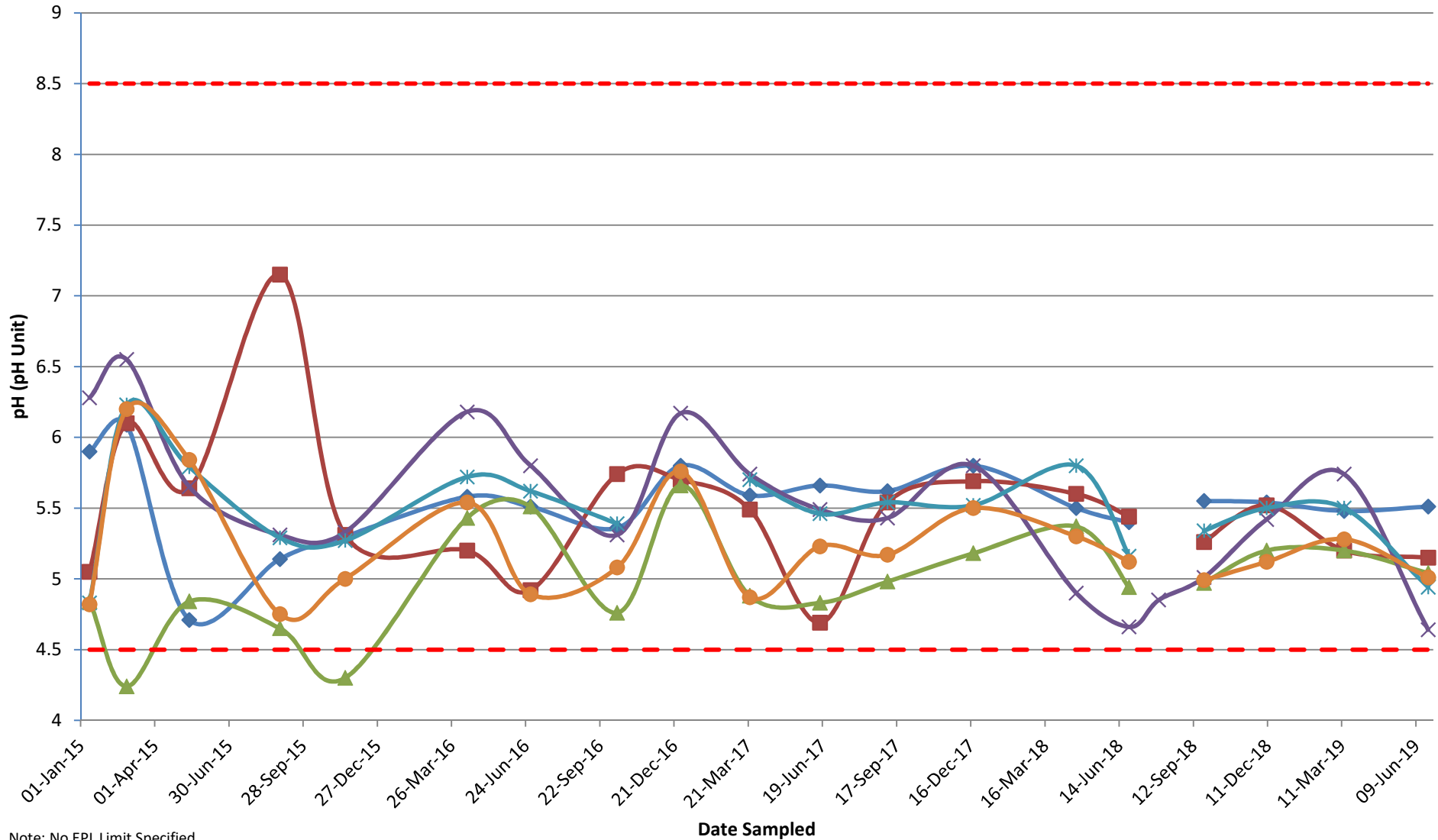
Quarterly Groundwater Monitoring

Sample Date	Lower SWMP Trigger	Upper SWMP Trigger	EPL Limit	pH						Comment
				EPA Point 1	EPA Point 2	EPA Point 3	EPA Point 4	EPA Point 5	EPA Point 6	
				SP1	SP2	SP3	SP4	SP5	BL158	
12-Jan-15	4.5	8.5	non-specified	5.9	5.05	4.84	6.28	4.83	4.82	
26-Feb-15	4.5	8.5	non-specified	6.09	6.1	4.24	6.55	6.23	6.2	
13-May-15	4.5	8.5	non-specified	4.71	5.64	4.84	5.65	5.79	5.84	
31-Aug-15	4.5	8.5	non-specified	5.14	7.15	4.65	5.31	5.29	4.75	
18-Nov-15	4.5	8.5	non-specified	5.3	5.31	4.3	5.33	5.27	5	
14-Apr-16	4.5	8.5	non-specified	5.58	5.2	5.43	6.18	5.72	5.54	
30-Jun-16	4.5	8.5	non-specified	5.51	4.92	5.51	5.8	5.62	4.89	
13-Oct-16	4.5	8.5	non-specified	5.36	5.74	4.76	5.31	5.39	5.08	
29-Dec-16	4.5	8.5	non-specified	5.8	5.7	5.66	6.17		5.76	Sampling error at SP5
23-Mar-17	4.5	8.5	non-specified	5.59	5.49	4.88	5.74	5.7	4.87	
16-Jun-17	4.5	8.5	non-specified	5.66	4.69	4.83	5.49	5.46	5.23	
06-Sep-17	4.5	8.5	non-specified	5.62	5.54	4.98	5.43	5.54	5.17	
19-Dec-17	4.5	8.5	non-specified	5.80	5.69	5.18	5.80	5.52	5.50	
23-Apr-18	4.5	8.5	non-specified	5.50	5.60	5.37	4.90	5.80	5.30	
26-Jun-18	4.5	8.5	non-specified	5.40	5.44	4.94	4.66	5.16	5.12	
01-Aug-18	4.5	8.5	non-specified				4.85			Additional SP4 monitoring event due to standpipe replacement
25-Sep-18	4.5	8.5	non-specified	5.55	5.26	4.97	5.01	5.34	4.99	
10-Dec-18	4.5	8.5	non-specified	5.54	5.52	5.20	5.42	5.50	5.12	
14-Mar-19	4.5	8.5	non-specified	5.48	5.20	5.20	5.74	5.50	5.28	SP1 & SP5 monitoring undertaken on 15/3/19 due to access restrictions on 14/3/2019.
24-Jun-19	4.5	8.5	non-specified	5.51	5.15	5.04	4.64	4.94	5.01	

Above nominated SWMP trigger level

FY 18/19 Statistics	EPA Point 1	EPA Point 2	EPA Point 3	EPA Point 4	EPA Point 5	EPA Point 6
Count	4	4	4	5	4	4
Min	5.48	5.15	4.97	4.64	4.94	4.99
Average	5.52	5.28	5.10	5.13	5.32	5.10
Max	5.55	5.52	5.20	5.74	5.50	5.28

Groundwater - pH



Legend: EPA Point 1 (blue diamond), EPA Point 2 (red square), EPA Point 3 (green triangle), EPA Point 4 (purple cross), EPA Point 5 (teal asterisk), EPA Point 6 (orange circle), Lower Trigger (red dashed line), Upper Trigger (red dashed line)

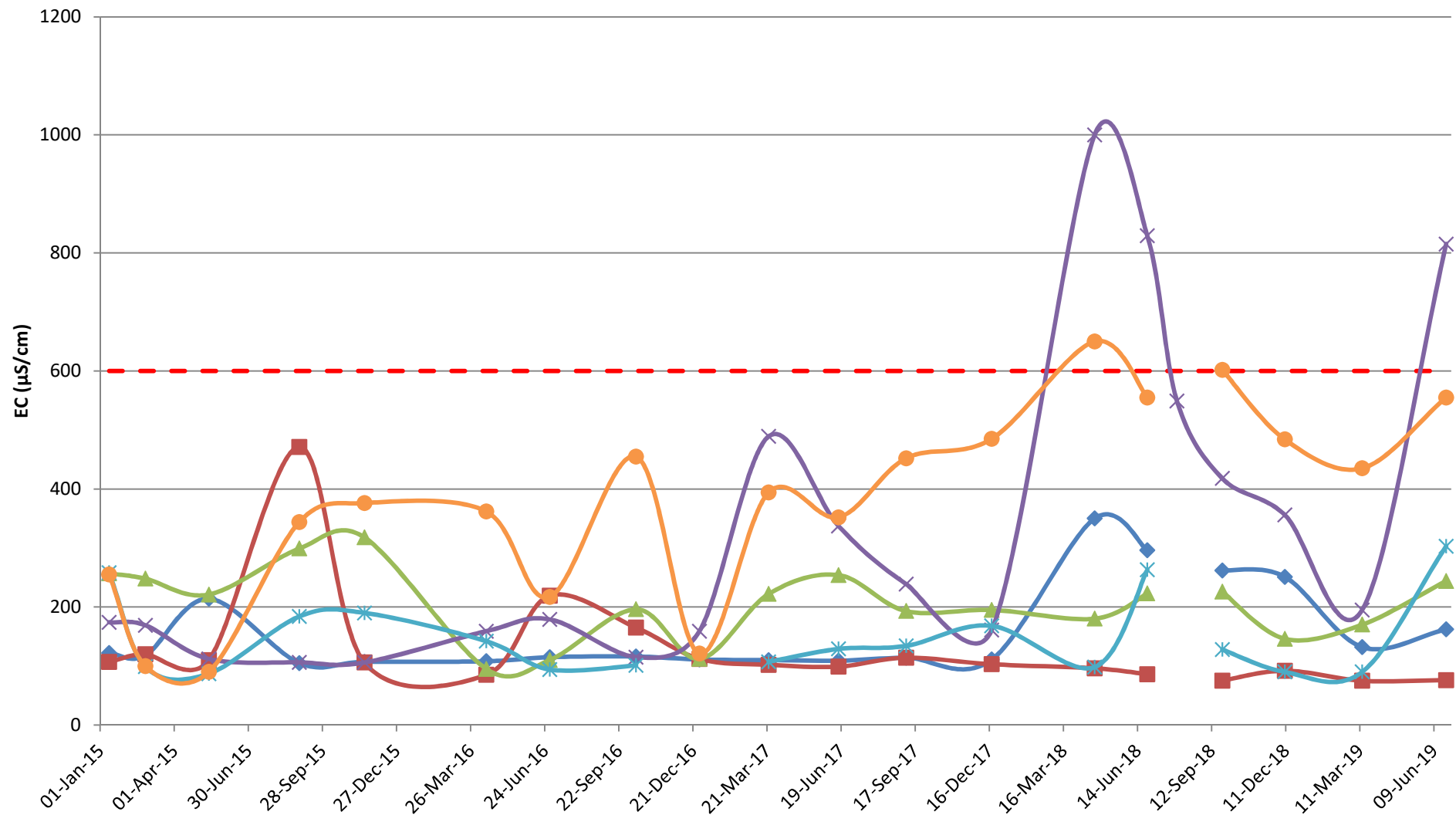
Quarterly Groundwater Monitoring

Electrical Conductivity (µS/cm)									
Sample Date	SWMP Trigger	EPL Limit	EPA Point 1	EPA Point 2	EPA Point 3	EPA Point 4	EPA Point 5	EPA Point 6	Comment
			SP1	SP2	SP3	SP4	SP5	BL158	
12-Jan-15	600	non-specified	122	107	257	174	258	255	
25-Feb-15	600	non-specified	118	120	248	169	99	100	
13-May-15	600	non-specified	214	110	221	112	87	90	
31-Aug-15	600	non-specified	105	471	299	106	184	344	
18-Nov-15	600	non-specified	107	106	318	106	190	376	
14-Apr-16	600	non-specified	108	85	95	159	142	362	
30-Jun-16	600	non-specified	115	219	110	179	94	217	
13-Oct-16	600	non-specified	116	165	196	115	101	455	
29-Dec-16	600	non-specified	111	112	112	159		121	Sampling Error at SP5
23-Mar-17	600	non-specified	110	102	222	489	107	394	
16-Jun-17	600	non-specified	109	99	254	337	129	352	
06-Sep-17	600	non-specified	114	114	193	239	134	452	
19-Dec-17	600	non-specified	111	103	195	161	168	485	
23-Apr-18	600	non-specified	350	96	180	1000	98	650	
26-Jun-18	600	non-specified	296	86	223	829	263	555	
01-Aug-18	600	non-specified				549			Additional SP4 monitoring event due to standpipe replacement
25-Sep-18	600	non-specified	262	75	226	418	128	602	
10-Dec-18	600	non-specified	251	92	146	356	90	484	
14-Mar-19	600	non-specified	132	75	170	195	90	435	SP1 & SP5 monitoring undertaken on 15/3/19 due to access restrictions on 14/3/2019.
24-Jun-19	600	non-specified	162	76	244	815	303	555	

Above nominated SWMP trigger level

FY 18/19 Statistics	EPA Point 1	EPA Point 2	EPA Point 3	EPA Point 4	EPA Point 5	EPA Point 6
Count	4	4	4	5	4	4
Min	132.0	75.0	146.0	195.0	90.0	435.0
Average	201.8	79.5	196.5	466.6	152.8	519.0
Max	262.0	92.0	244.0	815.0	303.0	602.0

Groundwater - Electrical Conductivity (EC)



Note: No EPL Limit Specified

- - - SWMP Trigger
- ◆ EPA Point 1
- EPA Point 2
- ▲ EPA Point 3
- × EPA Point 4
- ✱ EPA Point 5
- EPA Point 6

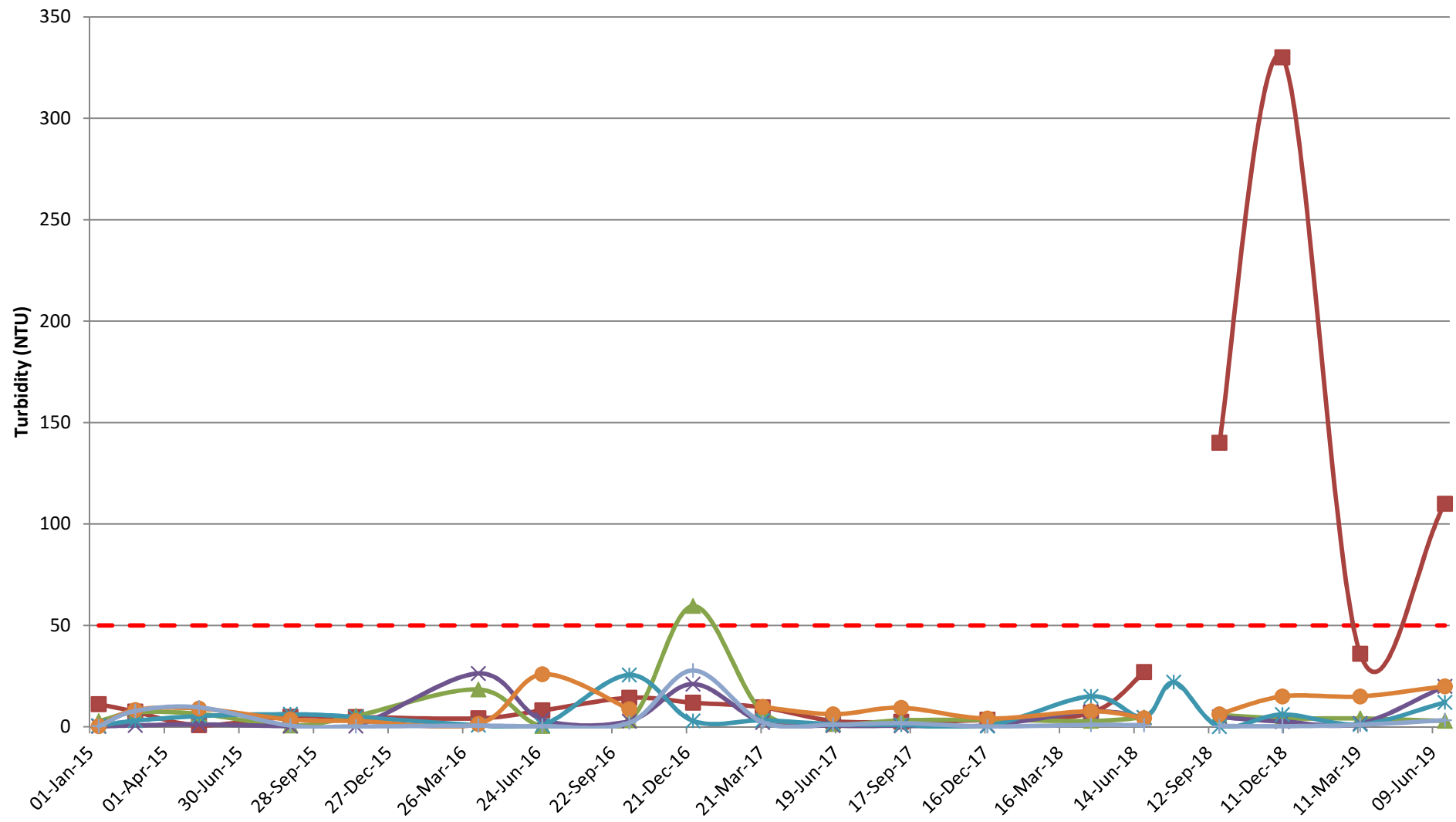
Quarterly Groundwater Monitoring

Turbidity (NTU)									
Sample Date	SWMP Trigger	EPL Limit	EPA Point 1	EPA Point 2	EPA Point 3	EPA Point 4	EPA Point 5	EPA Point 6	Comment
			SP1	SP2	SP3	SP4	SP5	BL158	
12-Jan-15	50	non-specified	11.2	2.8	0.2	0.6	0.3	0.3	
25-Feb-15	50	non-specified	7.5	7.1	0.7	3.0	8.3	7.8	
13-May-15	50	non-specified	0.8	6.4	1.2	5.3	9.0	9.6	
31-Aug-15	50	non-specified	5.0	0.6	0.3	6.2	3.6	0.6	
18-Nov-15	50	non-specified	4.8	5.4	0.3	4.9	2.9	0.2	
14-Apr-16	50	non-specified	4.2	18.4	26.3	0.8	1.5	0.6	
30-Jun-16	50	non-specified	8.1	0.3	3.6	0.7	25.9	0.3	
13-Oct-16	50	non-specified	14.3	3.1	2.8	25.6	8.7	2.0	
29-Dec-16	50	non-specified	11.9	59.5	21.1	2.9		27.8	Sampling Error at SP5
23-Mar-17	50	non-specified	9.6	7.4	2.2	3.2	9.8	2.3	
16-Jun-17	50	non-specified	2.9	1.3	0.6	1.3	6.2	1.1	
06-Sep-17	50	non-specified	2.5	3.2	0.5	1.0	9.4	1.8	
19-Dec-17	50	non-specified	3.5	3.4	0.7	0.4	4.1	0.2	
23-Apr-18	50	non-specified	6.9	2.9	7.6	15.0	7.7	1.0	
26-Jun-18	50	non-specified	27.0	4.6	4.6	4.6	4.2	0.8	
01-Aug-18	50	non-specified				22.0			Additional SP4 monitoring event due to standpipe replacement
25-Sep-18	50	non-specified	140.0	5.8	4.8	0.1	6.2	0.4	
10-Dec-18	50	non-specified	330.0	4.2	2.6	6.1	15.0	0.3	
14-Mar-19	50	non-specified	36.0	4.1	1.7	1.2	15.0	1.0	SP1 & SP5 monitoring undertaken on 15/3/19 due to access restrictions on 14/3/2019.
24-Jun-19	50	non-specified	110.0	2.9	20.0	12.0	20.0	3.3	

Above nominated SWMP trigger level

FY 18/19 Statistics	EPA Point 1	EPA Point 2	EPA Point 3	EPA Point 4	EPA Point 5	EPA Point 6
Count	4	4	4	5	4	4
Min	36.0	2.9	1.7	0.1	6.2	0.3
Average	154.0	4.3	7.3	8.3	14.1	1.3
Max	330.0	5.8	20.0	22.0	20.0	3.3

Groundwater - Turbidity (NTU)



Note: No EPL Limit Specified

- SWMP Trigger
- EPA Point 1
- EPA Point 2
- EPA Point 3
- EPA Point 4
- EPA Point 5
- EPA Point 6

1646 - Macka's Sand

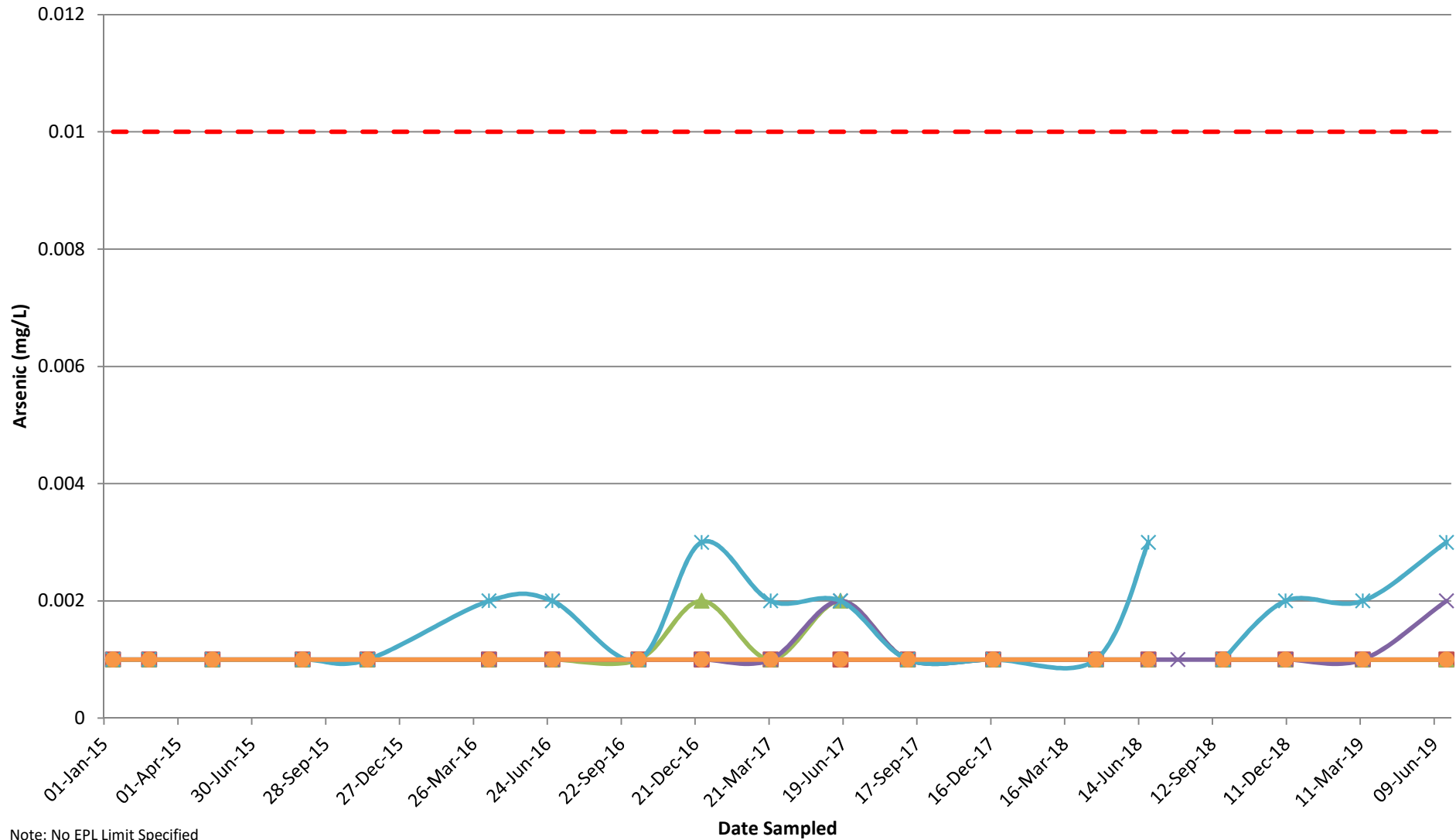
Quarterly Groundwater Monitoring

Sample Date	SWMP Trigger	EPL Limit	Arsenic (mg/L)						Comment
			EPA Point 1	EPA Point 2	EPA Point 3	EPA Point 4	EPA Point 5	EPA Point 6	
			SP1	SP2	SP3	SP4	SP5	BL158	
12-Jan-15	0.01	non-specified	0.001	0.001	0.001	0.001	0.001	0.001	
25-Feb-15	0.01	non-specified	0.001	0.001	0.001	0.001	0.001	0.001	
13-May-15	0.01	non-specified	0.001	0.001	0.001	0.001	0.001	0.001	
31-Aug-15	0.01	non-specified	0.001	0.001	0.001	0.001	0.001	0.001	
18-Nov-15	0.01	non-specified	0.001	0.001	0.001	0.001	0.001	0.001	
14-Apr-16	0.01	non-specified	0.001	0.001	0.001	0.001	0.002	0.001	
30-Jun-16	0.01	non-specified	0.001	0.001	0.001	0.001	0.002	0.001	
13-Oct-16	0.01	non-specified	0.001	0.001	0.001	0.001	0.001	0.001	
29-Dec-16	0.01	non-specified	0.001	0.001	0.002	0.001	0.003	0.001	
23-Mar-17	0.01	non-specified	0.001	0.001	0.001	0.001	0.002	0.001	
16-Jun-17	0.01	non-specified	0.001	0.001	0.002	0.002	0.002	0.001	
06-Sep-17	0.01	non-specified	0.001	0.001	0.001	0.001	0.001	0.001	
19-Dec-17	0.01	non-specified	0.001	0.001	0.001	0.001	0.001	0.001	
23-Apr-18	0.01	non-specified	0.001	0.001	0.001	0.001	0.001	0.001	
26-Jun-18	0.01	non-specified	0.001	0.001	0.001	0.001	0.003	0.001	
01-Aug-18	0.01	non-specified				0.001			Additional SP4 monitoring event due to standpipe replacement
25-Sep-18	0.01	non-specified	0.001	0.001	0.001	0.001	0.001	0.001	
10-Dec-18	0.01	non-specified	0.001	0.001	0.001	0.001	0.002	0.001	
14-Mar-19	0.01	non-specified	0.001	0.001	0.001	0.001	0.002	0.001	SP1 & SP5 monitoring undertaken on 15/3/19 due to access restrictions on 14/3/2019.
24-Jun-19	0.01	non-specified	0.001	0.001	0.001	0.002	0.003	0.001	

Note: Shaded cells indicate values less than 0.001 (i.e. limit of detection). '<' removed to populate graph
 Above nominated SWMP trigger level

FY 18/19 Statistics	EPA Point 1	EPA Point 2	EPA Point 3	EPA Point 4	EPA Point 5	EPA Point 6
Count	4	4	4	5	4	4
Min	0.001	0.001	0.001	0.001	0.001	0.001
Average	0.001	0.001	0.001	0.001	0.002	0.001
Max	0.001	0.001	0.001	0.002	0.003	0.001

Groundwater - Arsenic (mg/L)



SWMP Trigger EPA Point 1 EPA Point 2 EPA Point 3 EPA Point 4 EPA Point 5 EPA Point 6

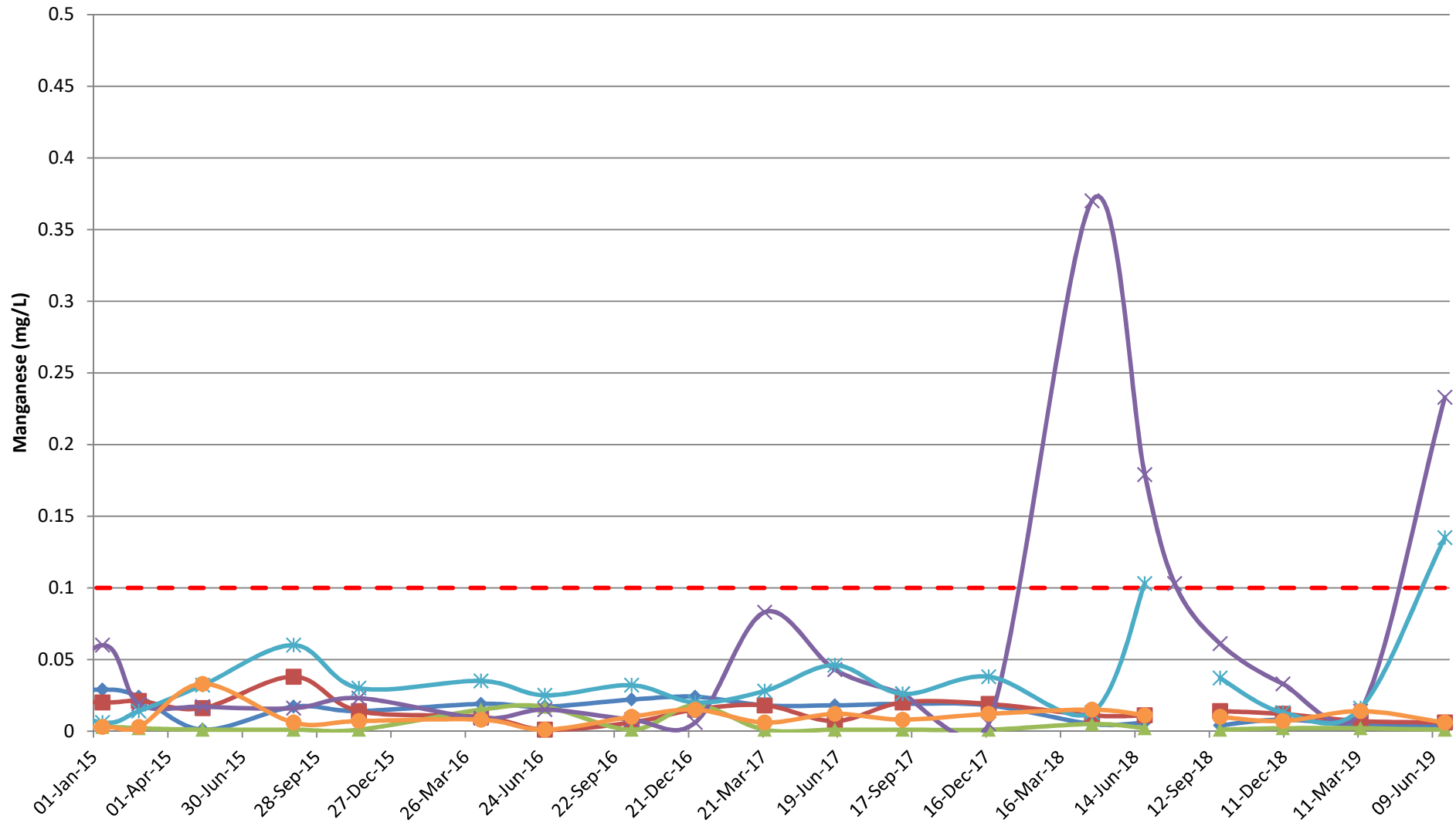
Quarterly Groundwater Monitoring

Manganese (mg/L)										
Sample Date	SWMP Trigger	EPL Limit	EPA Point 1	EPA Point 2	EPA Point 3	EPA Point 4	EPA Point 5	EPA Point 6	Comment	
			SP1	SP2	SP3	SP4	SP5	BL158		
01-Sep-08			Baseline Monitoring for this parameter not conducted							
01-Oct-08			Baseline Monitoring for this parameter not conducted							
19-Nov-10	0.1	non-specified	0.034	0.016	0.038	0.048	0.040	0.014	Recorded as <0.001. '<' removed to populate graph	
05-Jan-11	0.1	non-specified	0.040	0.026	0.016	0.084	0.023	0.021		
18-Mar-11	0.1	non-specified	0.011	0.034	0.017	0.014	0.040			
23-May-11	0.1	non-specified	0.035	0.045	0.005	0.046	0.048	0.009		
23-Aug-11	0.1	non-specified	0.028	0.027	0.001	0.032	0.020	0.010		
22-Nov-11	0.1	non-specified	0.001	0.024	0.001	0.019	0.014	0.009		
01-Mar-12	0.1	non-specified	0.001	0.029	0.001	0.036	0.042	0.006		
28-May-12	0.1	non-specified	0.027	0.028	0.002	0.023	0.044	0.007		
25-Sep-12	0.1	non-specified	0.002	0.026	0.001	0.024	0.016	0.005		
04-Jan-13	0.1	non-specified	0.002	0.028	0.001	0.010	0.019	0.003		
05-Mar-13	0.1	non-specified	0.028						Monitoring undertaken at SP1 only	
02-Apr-13	0.1	non-specified	0.025	0.007	0.003	0.021	0.016	0.006		
28-May-13	0.1	non-specified	0.026						Monitoring undertaken at SP1 only	
03-Sep-13	0.1	non-specified	0.025	0.002	0.001	0.012	0.038	0.004		
06-Jan-14	0.1	non-specified	0.022	0.022	0.002	0.010	0.017	0.005		
15-Apr-14	0.1	non-specified	0.022	0.022	0.002	0.028	0.019	0.004		
31-May-14	0.1	non-specified	0.018	0.022	0.002	0.027	0.004	0.004		
03-Oct-14	0.1	non-specified	0.024	0.023	0.002	0.015	0.022	0.002		
12-Jan-15	0.1	non-specified	0.029	0.020	0.003	0.060	0.006	0.003		
25-Feb-15	0.1	non-specified	0.024	0.021	0.002	0.019	0.014	0.003		
13-May-15	0.1	non-specified	0.001	0.016	0.001	0.017	0.032	0.033		
31-Aug-15	0.1	non-specified	0.017	0.038	0.001	0.016	0.060	0.006		
18-Nov-15	0.1	non-specified	0.014	0.014	0.001	0.023	0.030	0.007		
14-Apr-16	0.1	non-specified	0.019	0.010	0.015	0.009	0.035	0.008		
30-Jun-16	0.1	non-specified	0.017	0.001	0.017	0.015	0.025	0.001		
13-Oct-16	0.1	non-specified	0.022	0.006	0.001	0.008	0.032	0.010		
29-Dec-16	0.1	non-specified	0.024	0.015	0.018	0.006	0.020	0.015		
23-Mar-17	0.1	non-specified	0.018	0.018	0.001	0.083	0.028	0.006		
16-Jun-17	0.1	non-specified	0.018	0.007	0.001	0.043	0.046	0.012		
06-Sep-17	0.1	non-specified	0.019	0.020	0.001	0.026	0.026	0.008		
19-Dec-17	0.1	non-specified	0.018	0.019	0.001	0.005	0.038	0.012		
23-Apr-18	0.1	non-specified	0.005	0.011	0.005	0.37	0.013	0.015		
26-Jun-18	0.1	non-specified	0.006	0.011	0.002	0.179	0.103	0.011		
01-Aug-18	0.1	non-specified				0.103			Additional SP4 monitoring event due to standpipe replacement	
25-Sep-18	0.1	non-specified	0.004	0.014	0.001	0.061	0.037	0.010		
10-Dec-18	0.1	non-specified	0.008	0.012	0.002	0.033	0.013	0.007		
14-Mar-19	0.1	non-specified	0.004	0.007	0.002	0.014	0.016	0.014	SP1 & SP5 monitoring undertaken on 15/3/19 due to access restrictions on 14/3/2019.	
24-Jun-19	0.1	non-specified	0.004	0.006	0.001	0.233	0.135	0.006		

Note: Shaded cells indicate values less than 0.001 (i.e. limit of detection). '<' removed to populate graph
 Above nominated SWMP trigger level

FY 18/19 Statistics	EPA Point 1	EPA Point 2	EPA Point 3	EPA Point 4	EPA Point 5	EPA Point 6
Count	4	4	4	5	4	4
Min	0.004	0.006	0.001	0.014	0.013	0.006
Average	0.005	0.010	0.002	0.089	0.050	0.009
Max	0.008	0.014	0.002	0.233	0.135	0.014

Groundwater - Manganese (mg/L)



Note: No EPL Limit Specified

Date Sampled

SWMP Trigger EPA Point 1 EPA Point 2 EPA Point 3 EPA Point 4 EPA Point 5 EPA Point 6

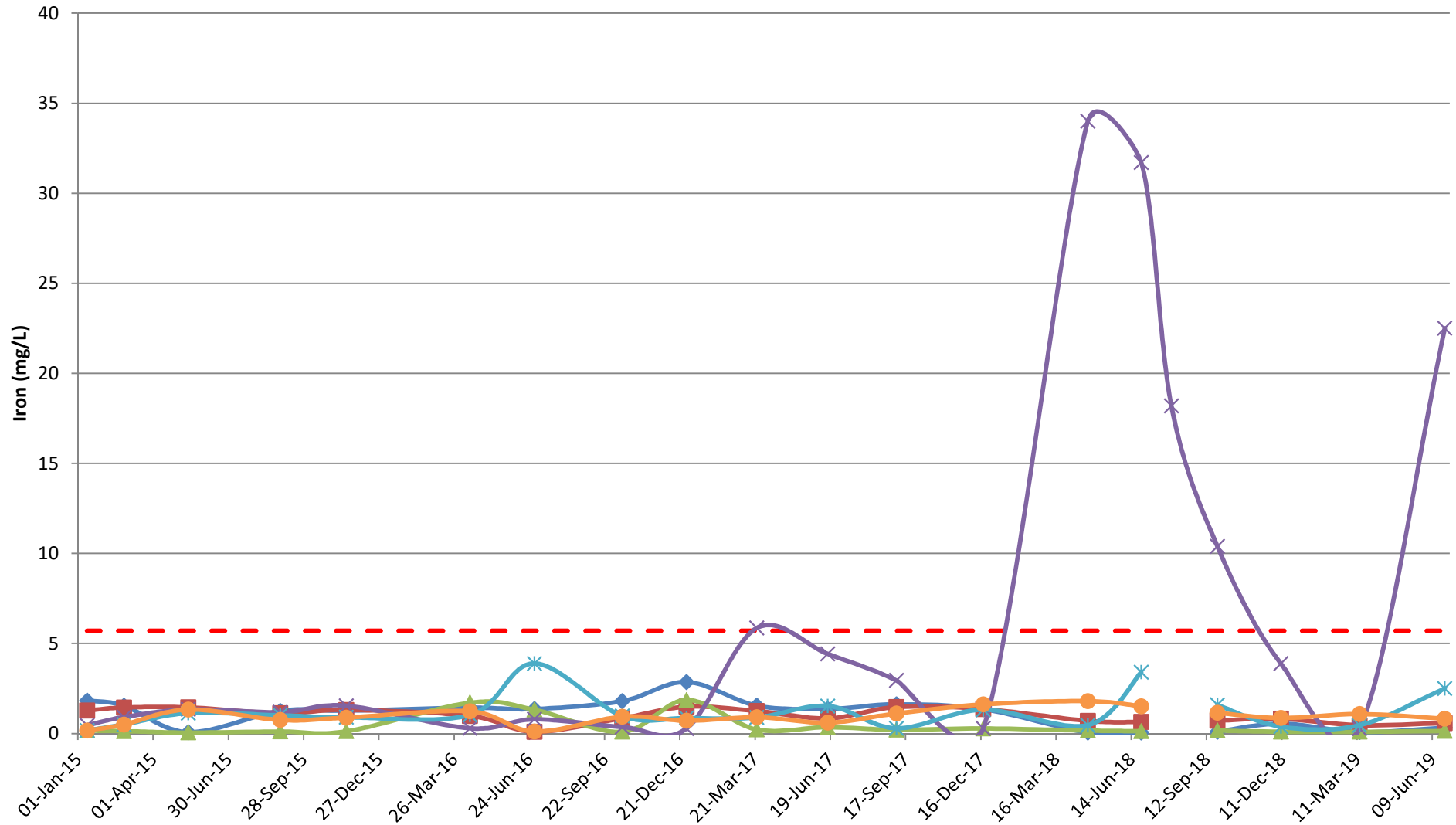
Quarterly Groundwater Monitoring

Iron (mg/L)									
Sample Date	SWMP Trigger	EPL Limit	EPA Point 1	EPA Point 2	EPA Point 3	EPA Point 4	EPA Point 5	EPA Point 6	Comment
			SP1	SP2	SP3	SP4	SP5	BL158	
12-Jan-15	5.7	non-specified	1.83	1.28	0.16	0.46	0.17	0.16	
25-Feb-15	5.7	non-specified	1.54	1.44	0.13	0.91	0.50	0.50	
13-May-15	5.7	non-specified	0.07	1.45	0.05	1.34	1.13	1.33	
31-Aug-15	5.7	non-specified	1.25	1.12	0.11	1.18	1.01	0.75	
18-Nov-15	5.7	non-specified	1.27	1.31	0.12	1.54	0.90	0.88	
14-Apr-16	5.7	non-specified	1.43	0.98	1.71	0.29	1.03	1.23	
30-Jun-16	5.7	non-specified	1.36	0.10	1.32	0.79	3.89	0.11	
13-Oct-16	5.7	non-specified	1.80	0.85	0.09	0.36	0.97	0.93	
29-Dec-16	5.7	non-specified	2.86	1.49	1.86	0.28	0.86	0.71	
23-Mar-17	5.7	non-specified	1.55	1.25	0.22	5.86	0.89	0.90	
16-Jun-17	5.7	non-specified	1.36	0.84	0.35	4.42	1.53	0.60	
06-Sep-17	5.7	non-specified	1.62	1.47	0.20	2.95	0.29	1.11	
19-Dec-17	5.7	non-specified	1.35	1.36	0.28	0.29	1.32	1.62	
23-Apr-18	5.7	non-specified	0.05	0.70	0.16	34	0.46	1.80	
26-Jun-18	5.7	non-specified	0.05	0.64	0.13	31.7	3.40	1.51	
01-Aug-18	5.7	non-specified				18.2			Additional SP4 monitoring event due to standpipe replacement
25-Sep-18	5.7	non-specified	0.09	0.71	0.16	10.4	1.59	1.15	
10-Dec-18	5.7	non-specified	0.55	0.82	0.10	3.88	0.38	0.86	
14-Mar-19	5.7	non-specified	0.08	0.46	0.09	0.27	0.46	1.08	SP1 & SP5 monitoring undertaken on 15/3/19 due to access restrictions on 14/3/2019.
24-Jun-19	5.7	non-specified	0.32	0.58	0.14	22.5	2.50	0.82	

Above nominated SWMP trigger level

FY 17/18 Statistics	EPA Point 1	EPA Point 2	EPA Point 3	EPA Point 4	EPA Point 5	EPA Point 6
Count	3	3	3	4	3	3
Min	0.08	0.46	0.09	0.27	0.38	0.86
Average	0.24	0.66	0.12	8.19	0.81	1.03
Max	0.55	0.82	0.16	18.20	1.59	1.15

Groundwater - Iron (mg/L)



Note: No EPL Limit Specified

- SWMP Trigger
- EPA Point 1
- EPA Point 2
- EPA Point 3
- EPA Point 4
- EPA Point 5
- EPA Point 6